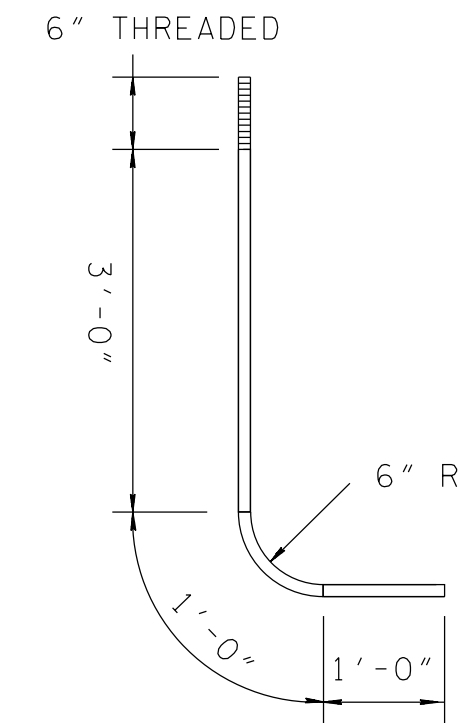


TYPE	YEAR	PROJECT NO.	SHEET NO.
R.O.W.	2014	NH-I-640-7(161)	25A
CONST.	2015	NH-I-640-7(161)	25A

KNOX CO.  
47008-3150-44 (CONST.)

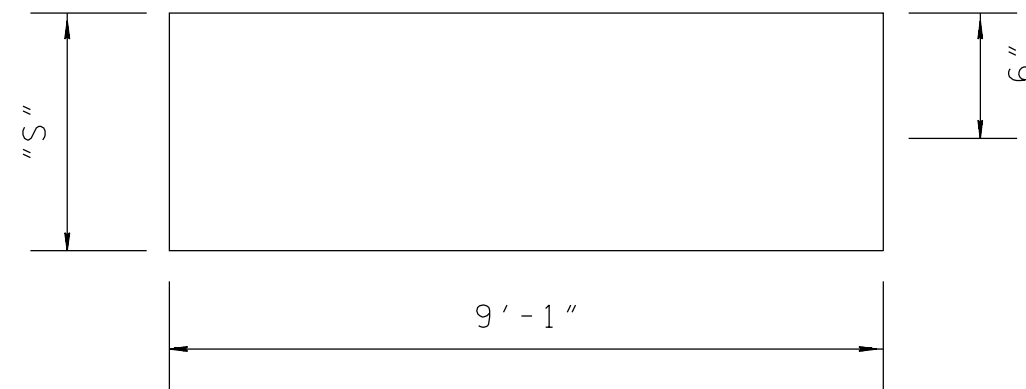
I-640



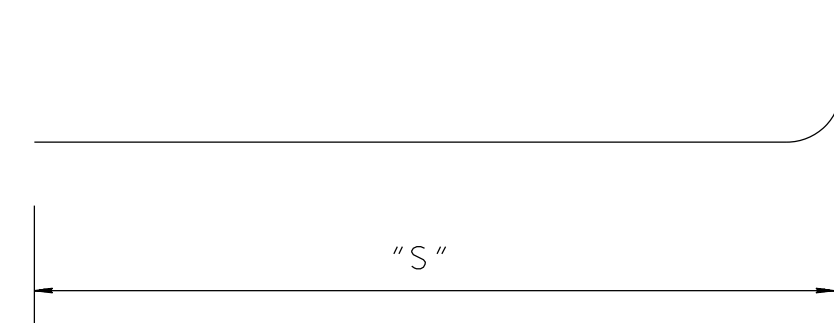
ANCHOR BOLT DETAIL  
ASTM A-687 GALVANIZED STEEL (OR AS SUPPLIED BY THE SIGN FABRICATOR)



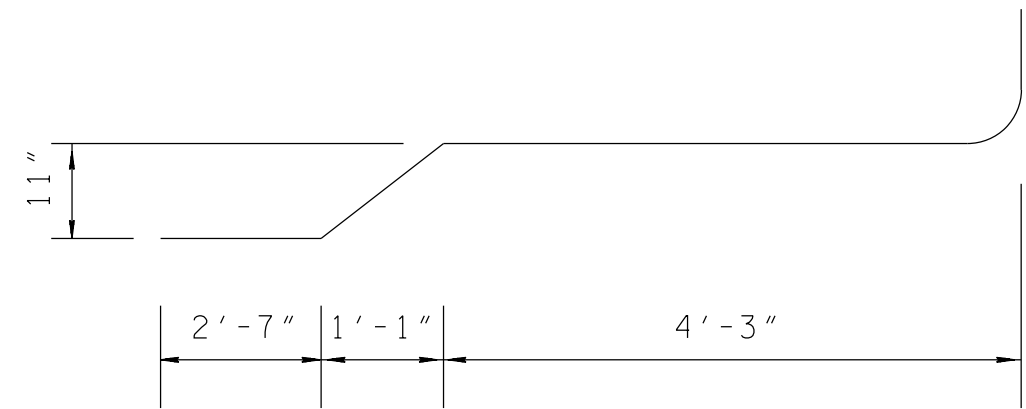
D BARS



L BARS

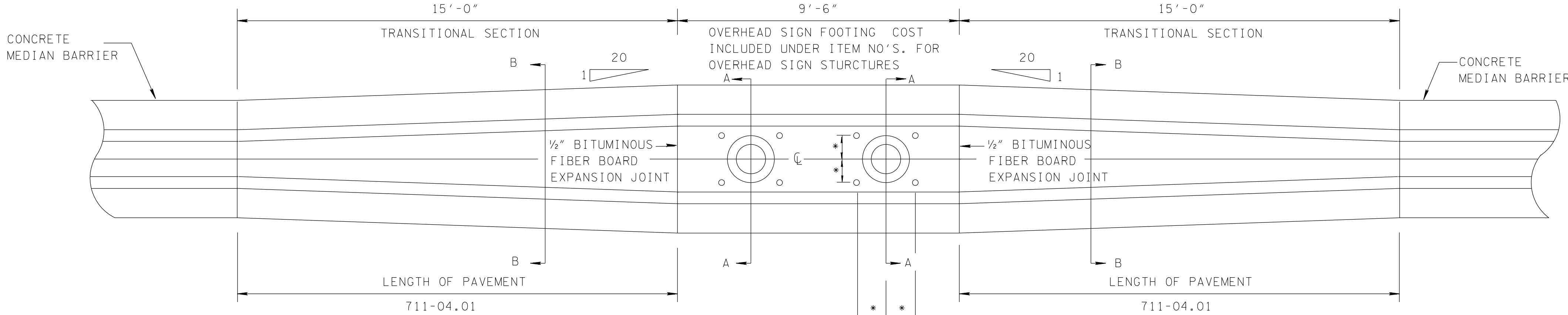


C BARS



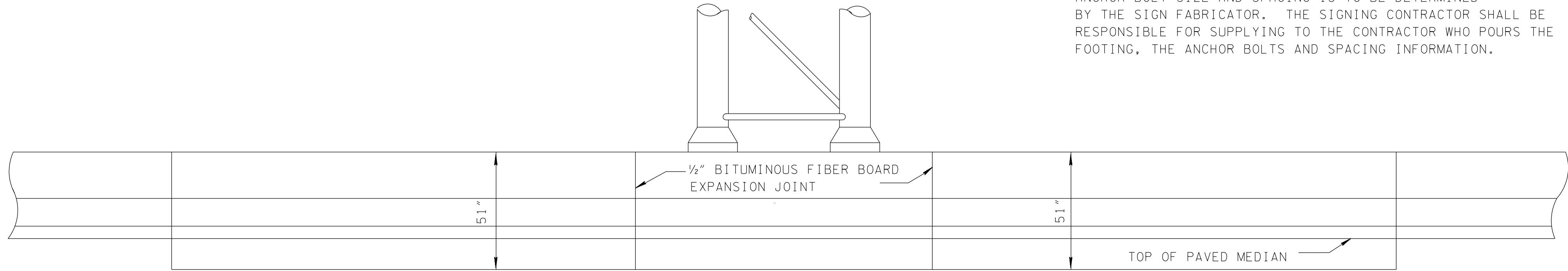
BARS CA 700

BAR DETAILS



PLAN

\*NOTE:  
ANCHOR BOLT SIZE AND SPACING IS TO BE DETERMINED BY THE SIGN FABRICATOR. THE SIGNING CONTRACTOR SHALL BE RESPONSIBLE FOR SUPPLYING TO THE CONTRACTOR WHO POURS THE FOOTING, THE ANCHOR BOLTS AND SPACING INFORMATION.



ELEVATION

BILL OF STEEL - PER FOOTING

BAR	SIZE	NO. REQ'D.	DIM. "S"	LENGTH
C 700	7	4	8'-2"	9'-3"
CA 700	7	20		9'-3"
D 400	4	6	14'-6"	15'-6"
D 401	4	15	5'-6"	6'-6"
L 400	4	3	1'-9"	22'-2"
L 401	4	1	2'-4"	23'-4"
L 402	4	3	3'-7"	25'-10"

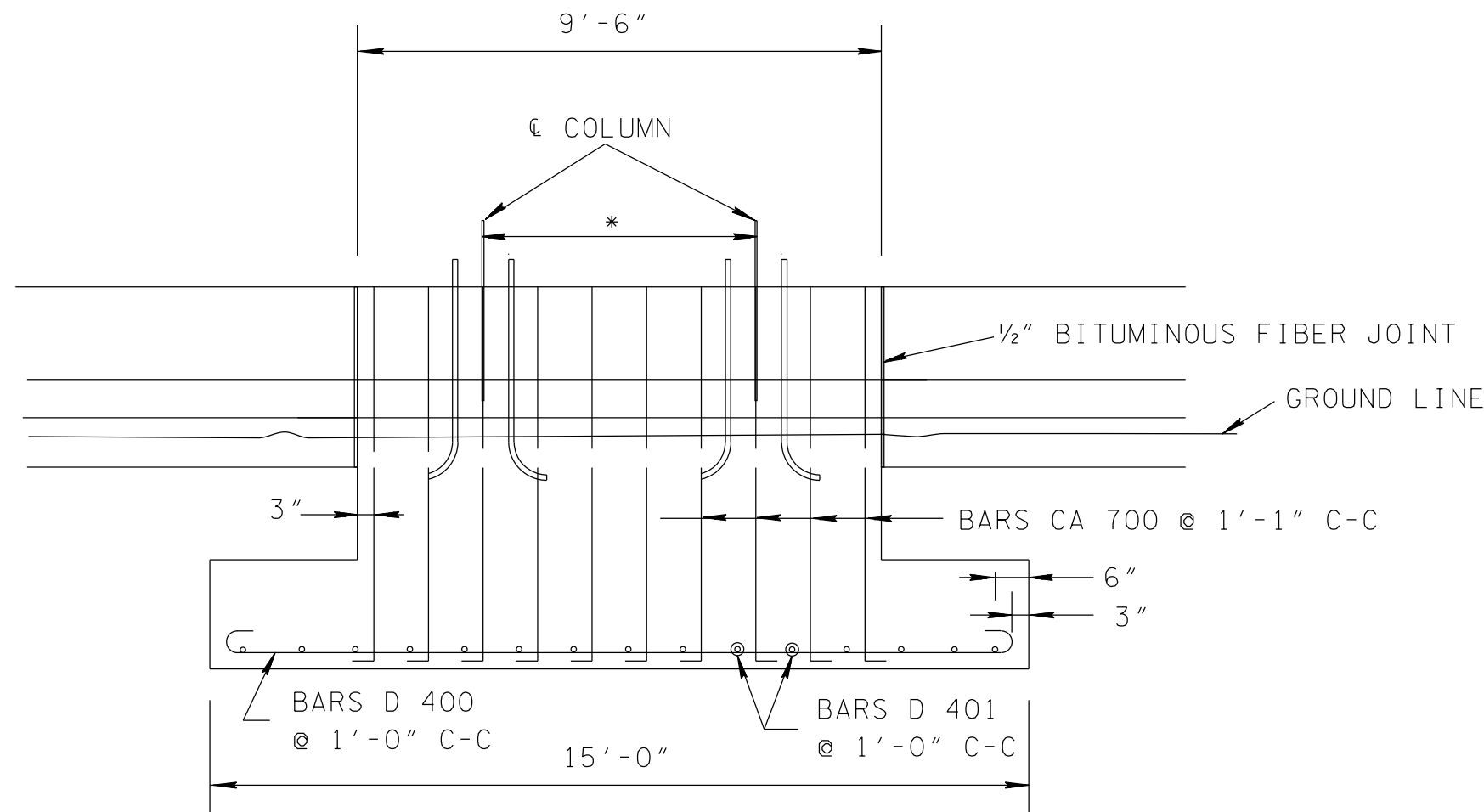
ESTIMATED QUANTITIES

CLASS "A" CONCRETE	13.0 C.Y.
REINFORCING STEEL	655 LB.

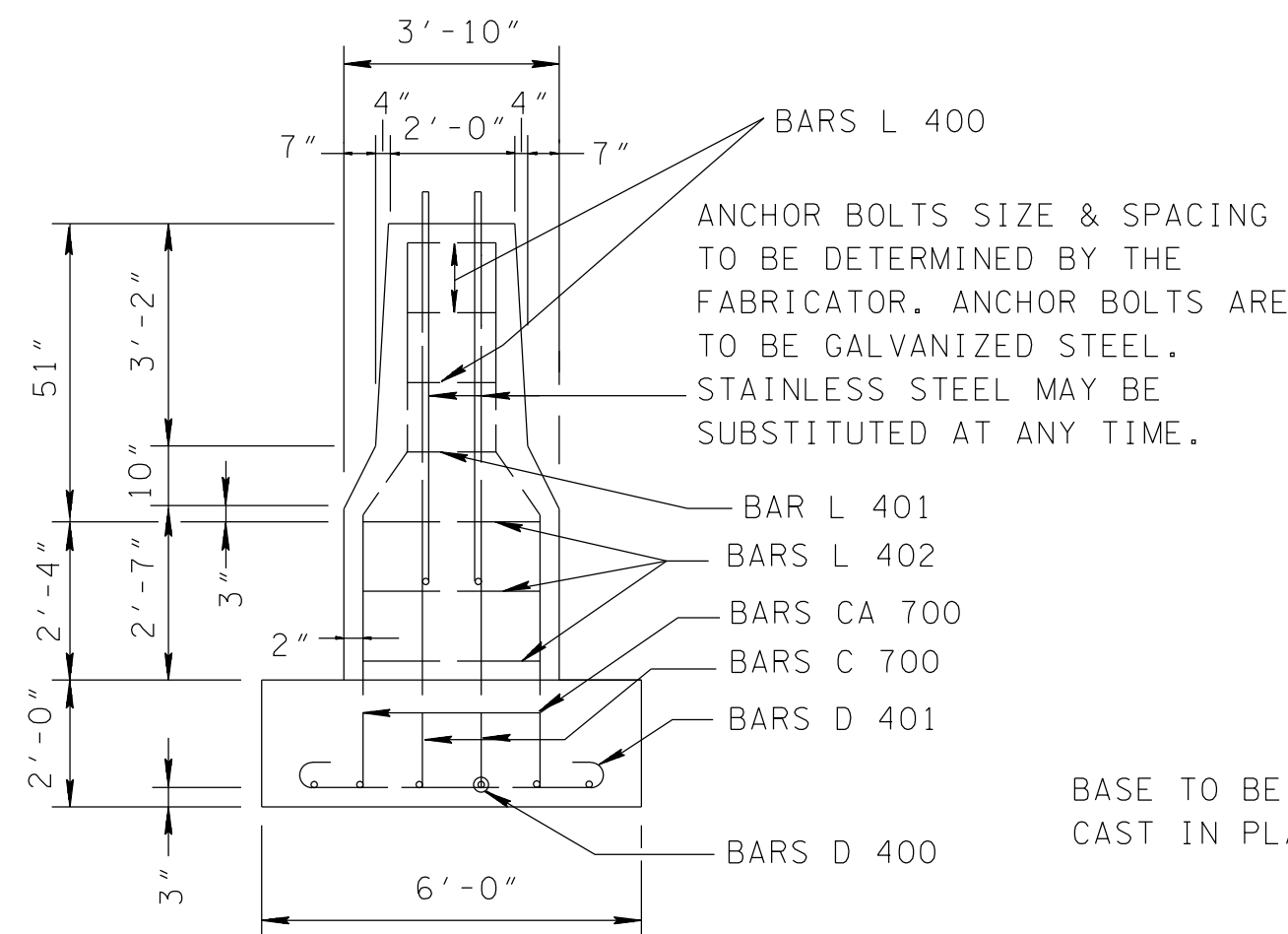
FINISHED CONCRETE SURFACES: CONCRETE FINISHING SHALL BE IN ACCORDANCE WITH SECTION 604.22 OF THE TENNESSEE STANDARD SPECIFICATIONS. A TEXTURED COATED FINISH SHALL BE USED IN LIEU OF A CLASS 2 FINISH. THE COLOR OF THE FINISH SHALL BE SIMILAR TO WHITE FEDERAL SPECIFICATION NO. 37886, A COLOR SAMPLE SHALL BE SUBMITTED TO THE MATERIALS AND TEST ENGINEER FOR APPROVAL. ALL COST OF FINISHING TO BE INCLUDED IN ITEM NO. 711-04.01.

PLASTIC COATED DOWEL BARS WILL BE PERMITTED AS AN ALTERNATE TO PAINTED AND GREASED DOWEL BARS. THE PLASTIC COATING SHALL BE AN APPROVED HIGH DENSITY POLYETHELENE 17 MILS \*(± 2 MILS) BONDED TO THE BAR WITH AN APPROVED ADHESIVE 1 TO 8 MILS THICK (4 MILS NOMINAL).

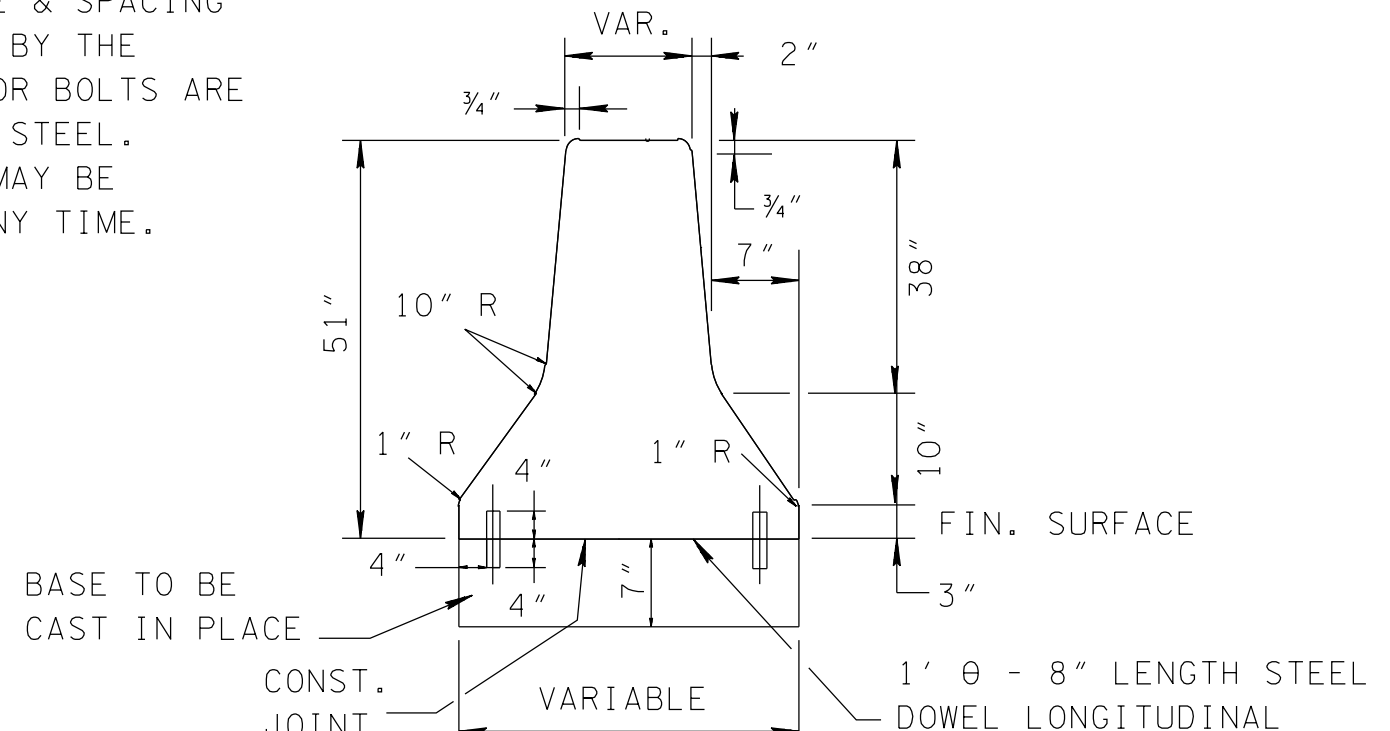
PRICE OF BARRIER INCLUDES COST OF ALL REINFORCEMENT, DOWELS, DRILLING, JOINTS, JOINT MATERIAL AND ANY OTHER INCIDENTAL ITEMS NECESSARY FOR COMPLETE INSTALLATION OF THE BARRIER.



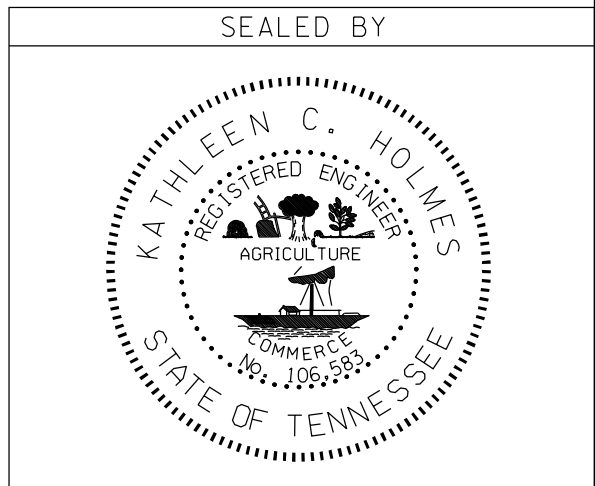
FOOTING F-1



SECTION "A-A"



SECTION "B-B"



STATE OF TENNESSEE  
DEPARTMENT OF TRANSPORTATION

DETAILS  
OVERHEAD  
SIGN STRUCTURE  
MOUNTED ON CONCRETE  
MEDIAN BARRIER  
51" WALL  
N.T.S.